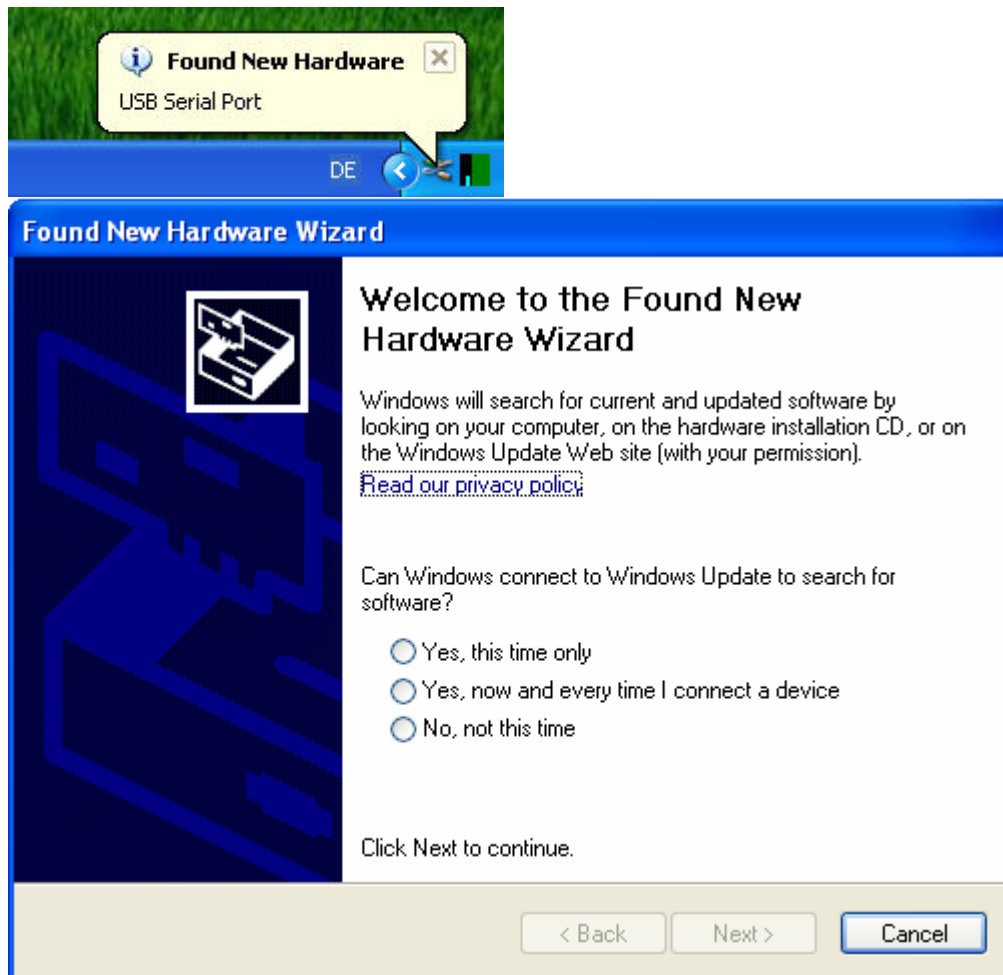
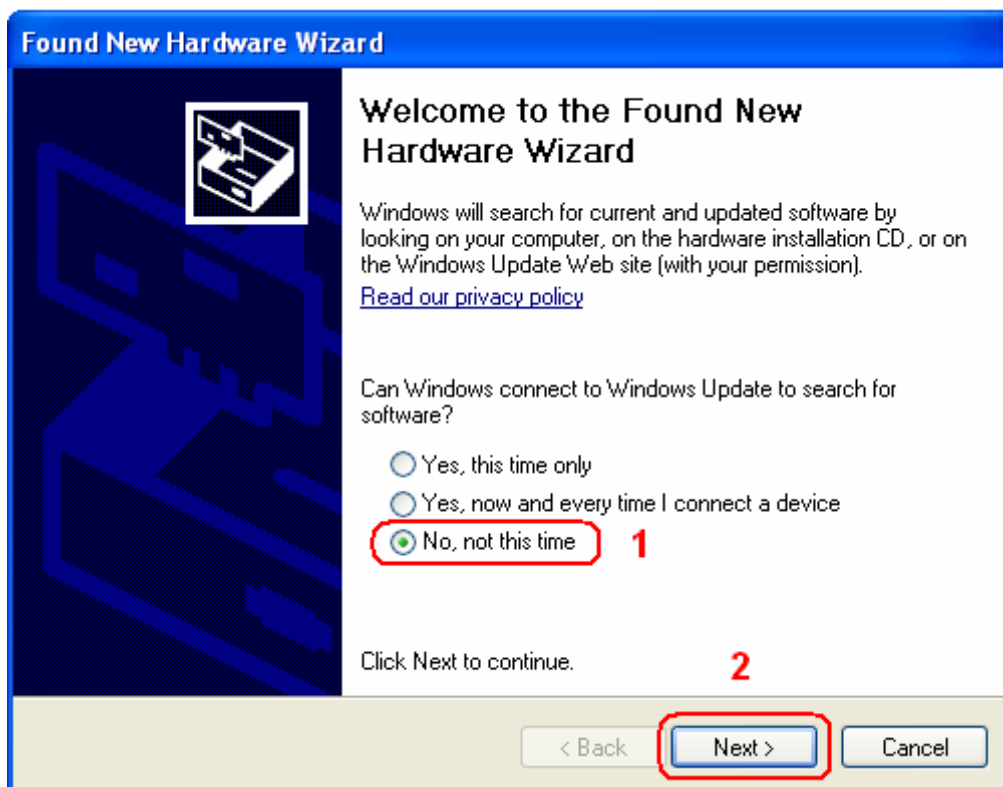


Driver installation for the C5 USB interface

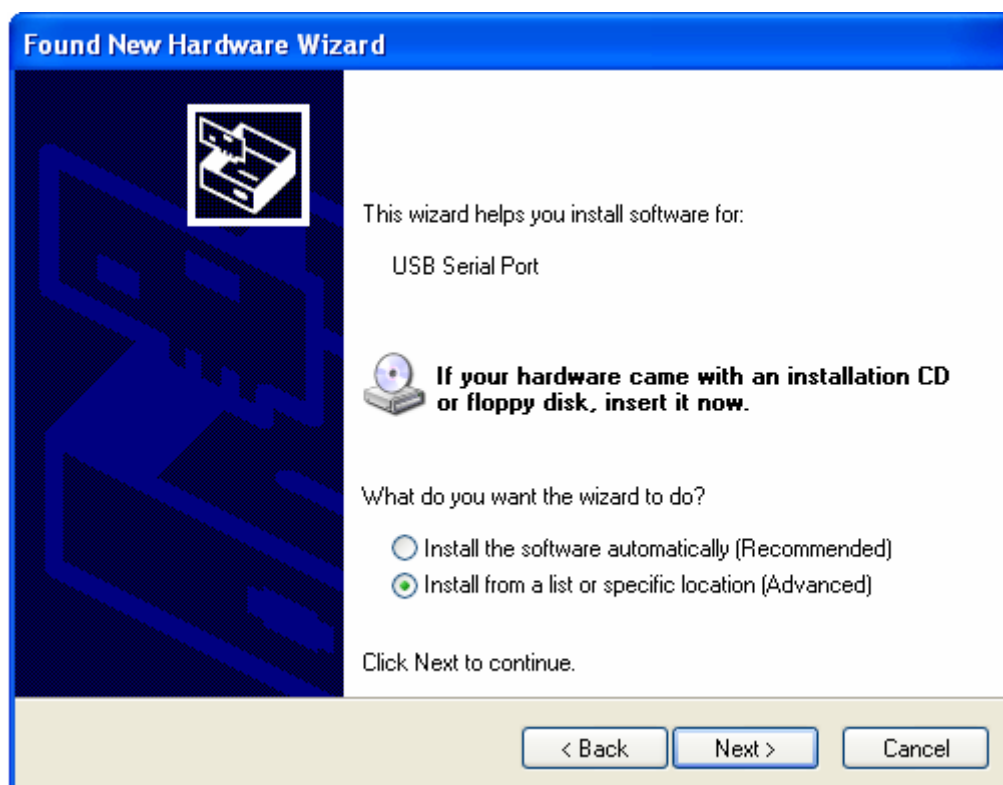
In the C5 the chip from FTDI(Future Technology Devices International Limited, <http://www.ftdichip.com>) has been used. This company provides a wide spectrum of system drivers for this chip. An installing this driver is relatively simple, but it may vary in each OS. An installation process under Windows XP SP2 is here introduced as an example.

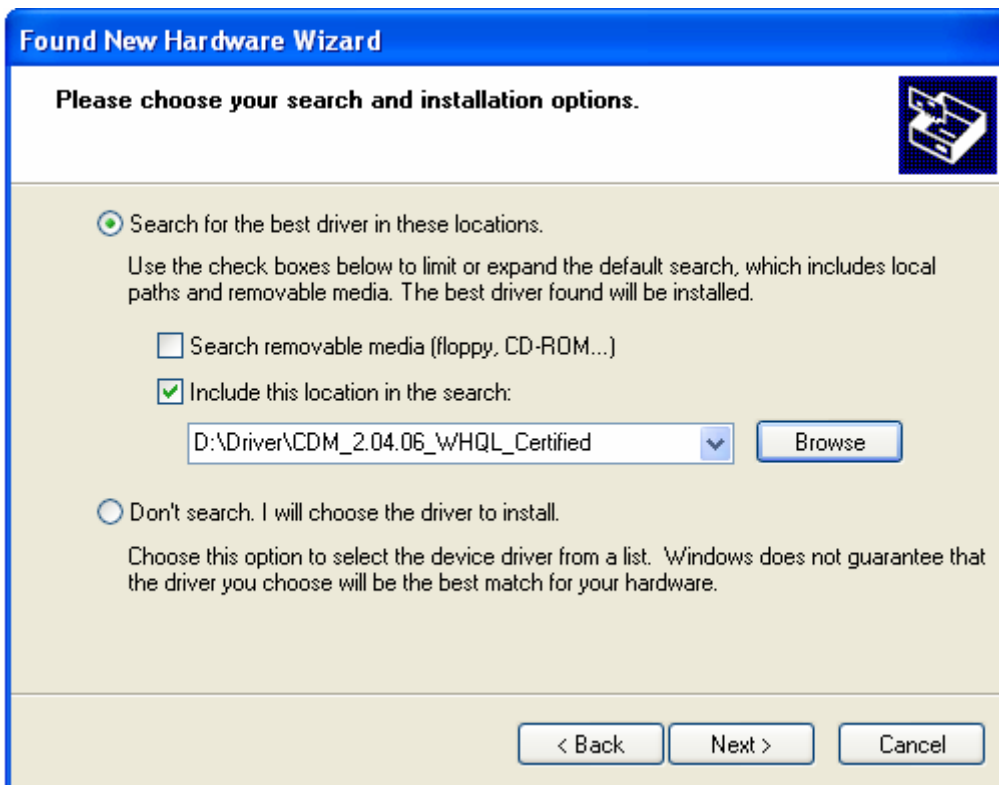


Step 1: The device is attached.

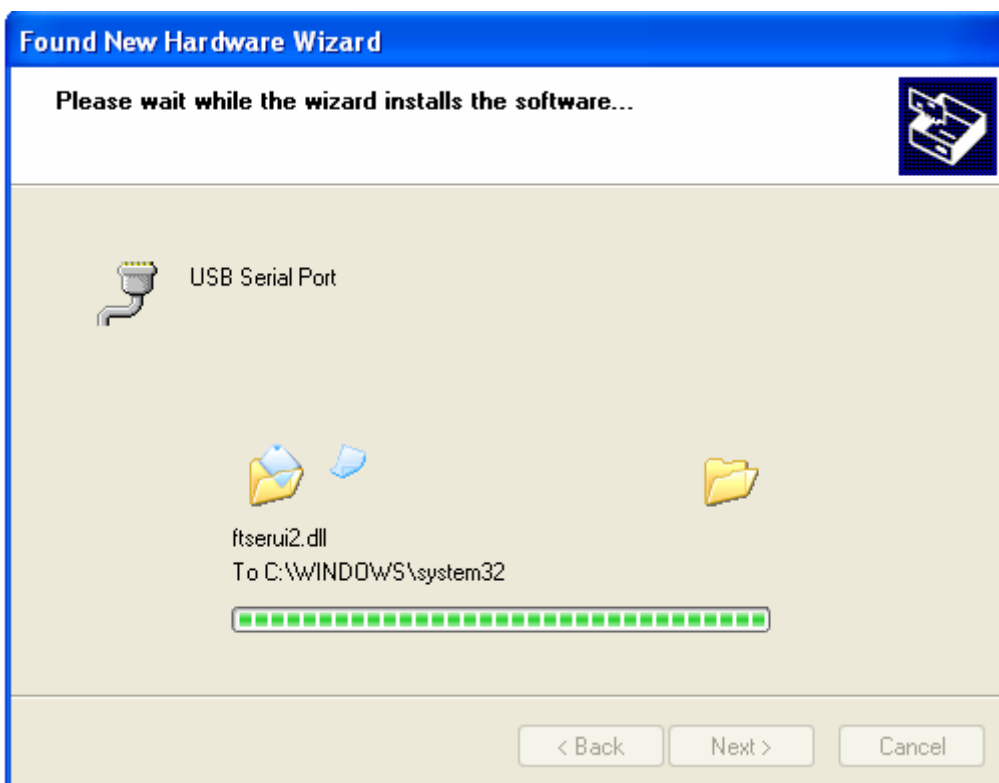


Step 2: Point 3 (1) is selected and confirmed(2).

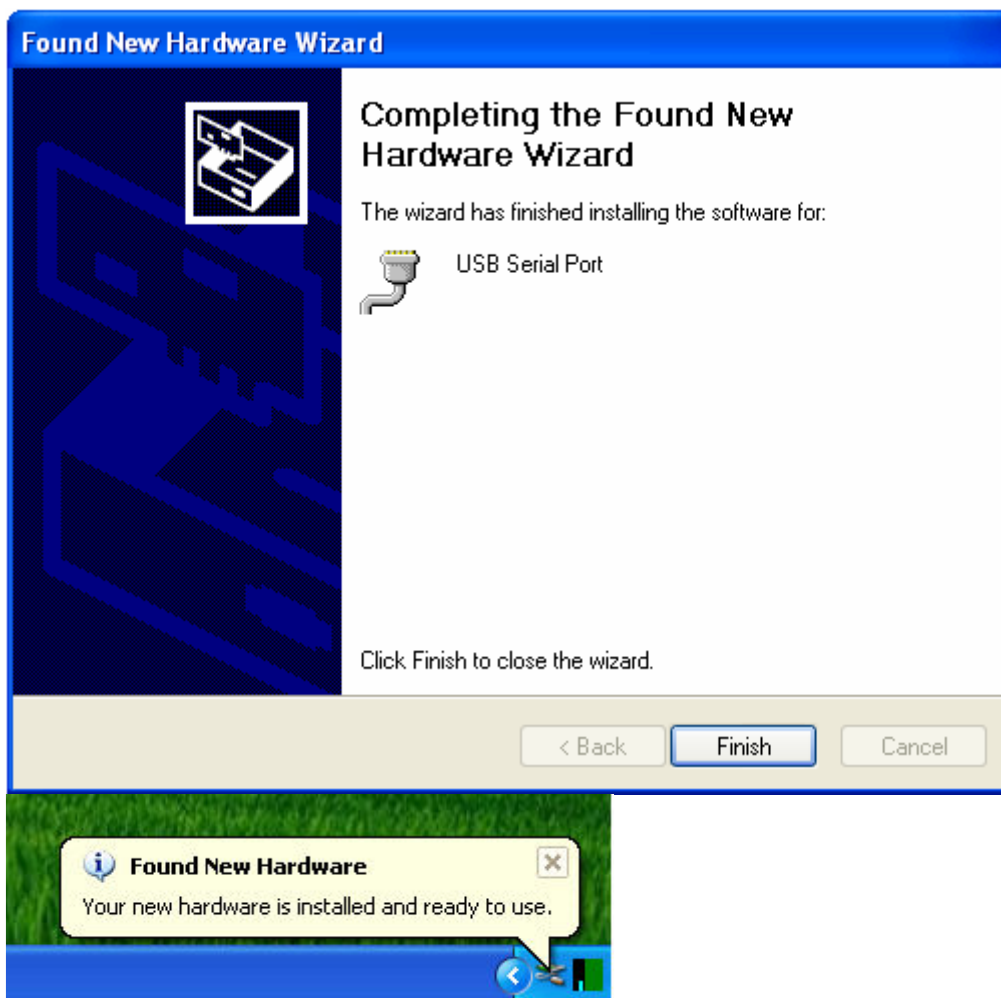




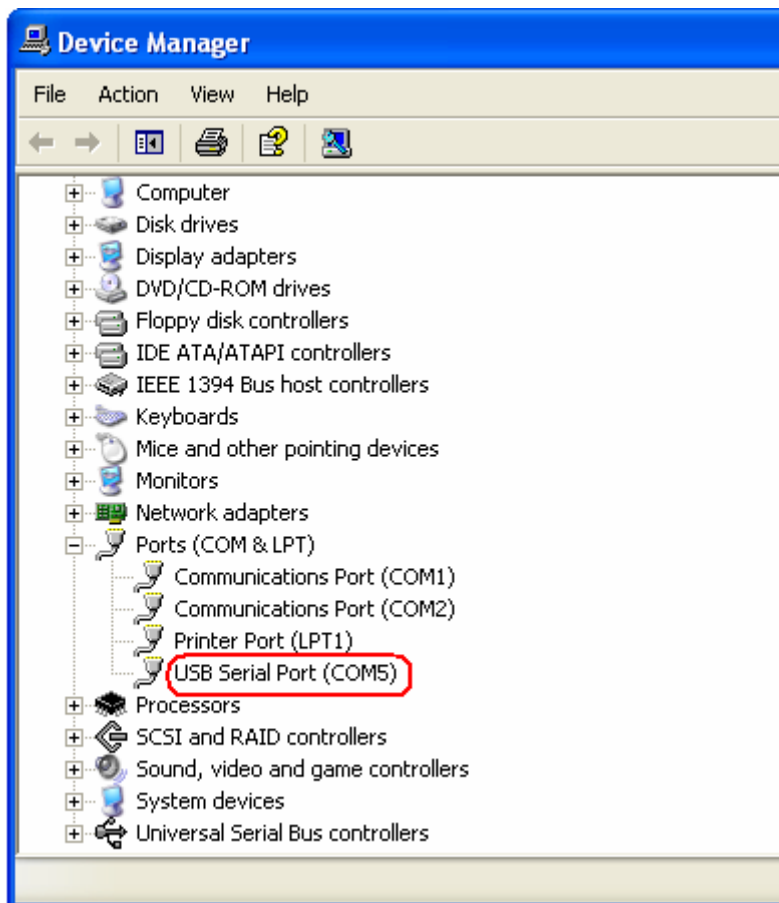
Step 3: Driver location is selected and confirmed.



Step 4: The driver is installed.



Step 5: The installation is completed.



Step 6: The COM-Serial-Port is memorised... Finished!