

Treiber-Installation für das HB627-Modul

Die Installation des Treibers ist relativ einfach und wird in diesem Fall unter Windows XP SP2 vorgestellt.



Schritt N1: Das Gerät wird zum Computer angeschlossen.

Found New Hardware Wizard



Welcome to the Found New Hardware Wizard

Windows will search for current and updated software by looking on your computer, on the hardware installation CD, or on the Windows Update Web site (with your permission).

[Read our privacy policy](#)

Can Windows connect to Windows Update to search for software?

- Yes, this time only
- Yes, now and every time I connect a device
- No, not this time

Click Next to continue.

< Back

Next >

Cancel

Found New Hardware Wizard



This wizard helps you install software for:

HB627 - 12bit USB ADC



If your hardware came with an installation CD or floppy disk, insert it now.

What do you want the wizard to do?

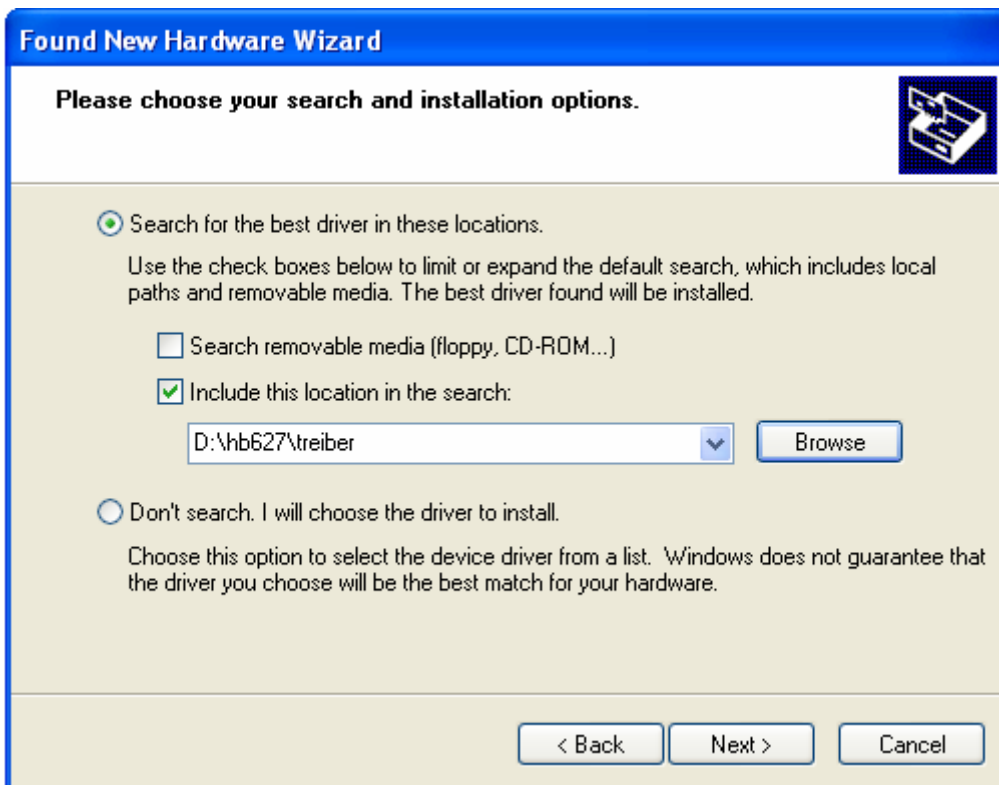
- Install the software automatically (Recommended)
- Install from a list or specific location (Advanced)

Click Next to continue.

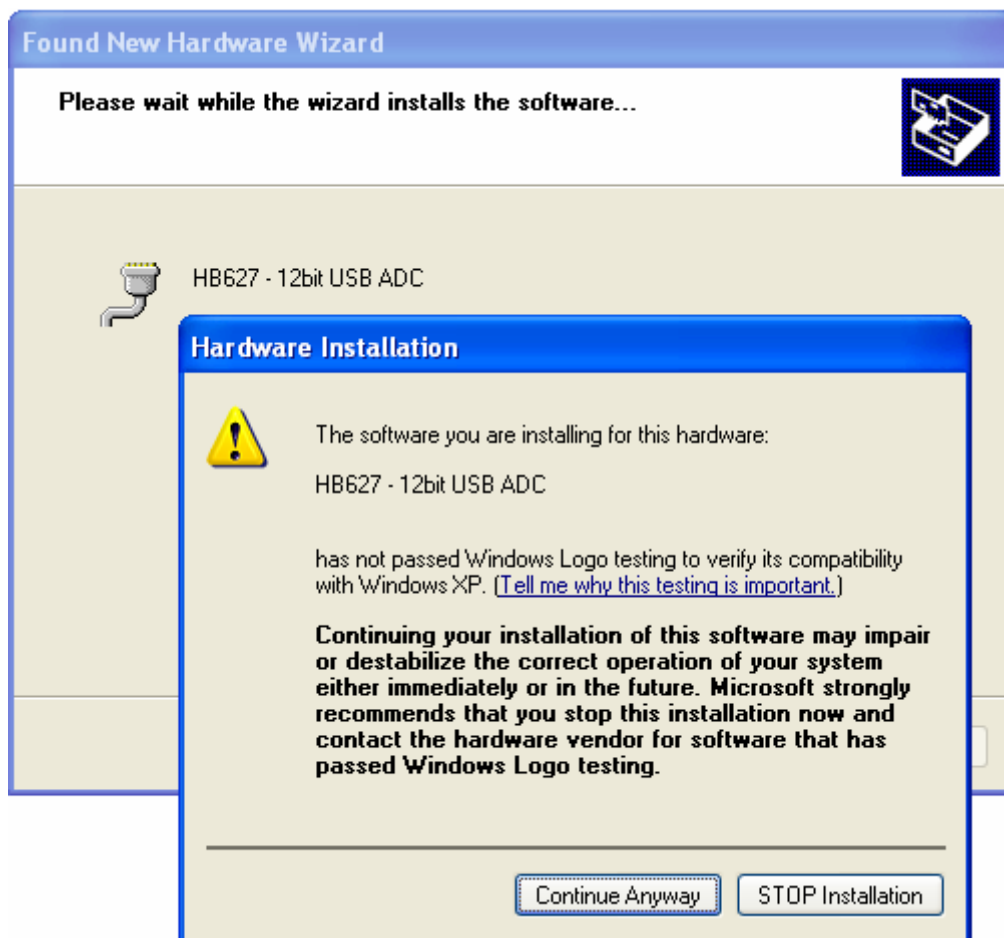
< Back

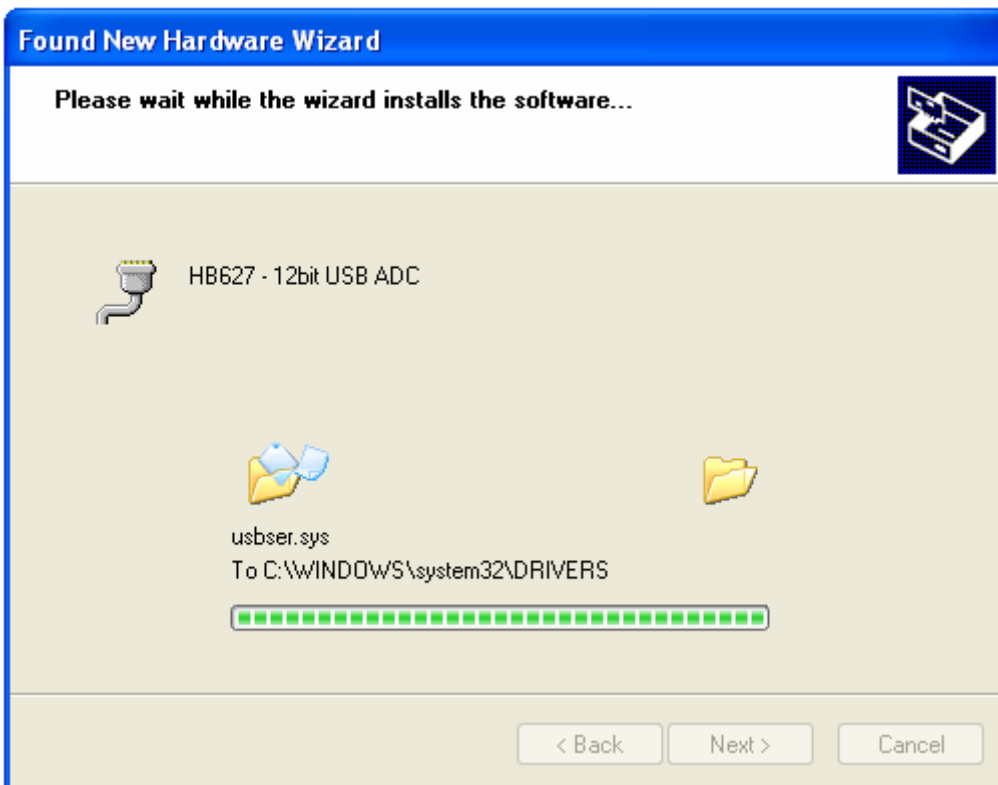
Next >

Cancel

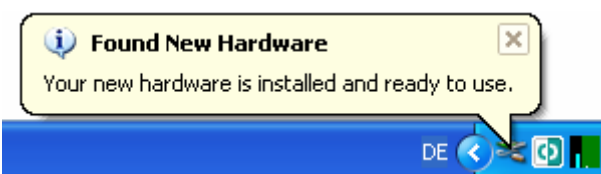


Schritt N2: Der Ort des Treibers wird ausgewählt und bestätigt.

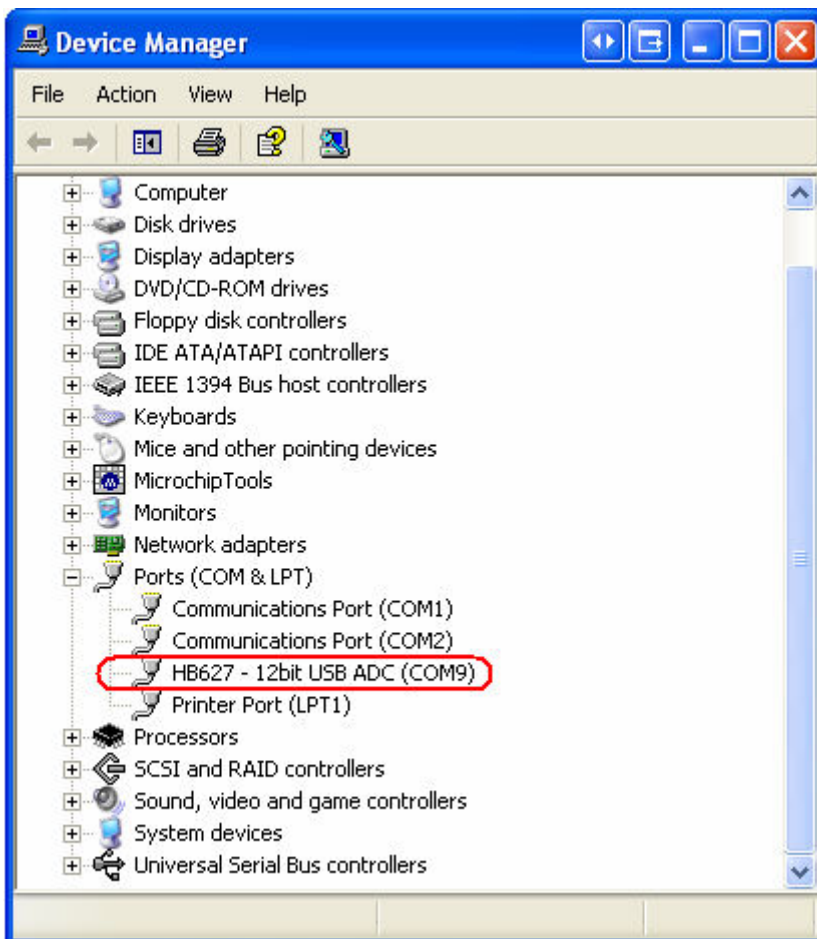




Schritt N3: Der Treiber wird installiert.



Schritt N4: Die Installation ist abgeschlossen.



Schritt N5: Die COM-Port-Nummer merken... Fertig!